

ALBANY

ENTRE//MATIC



ADS

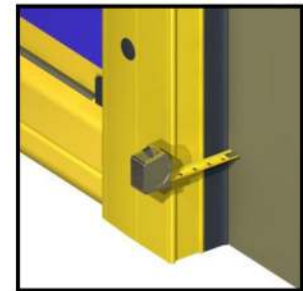
AUTOMATIC DOOR SPECIALIST

Puertas & Portones Automaticos S.A. de C.V.

¡Nuestra pasión es la Solución!....

»PUERTAS RAPIDAS ENROLLABLES MARCA ALBANY MOD.ULTRAFAS.

Albany UltraFast



MANUAL DE INSTALACION



(229) 461-7028 portonesautomaticos@adsver.com.mx
 ads.portonesautomaticos@outlook.com



ADS

(229) 927-55107, 167-8080, 167-8007, 151-7529

www.adsver.com.mx

V05.26

INTRODUCTION

The contents of this manual are designed to help you operate and maintain Albany UltraFast™, high speed door. **DO NOT operate or perform maintenance on the high speed door unless you have read through the instructions in this manual.**



The safety alert symbol is used to identify safety information about hazards that can result in personal injury. A signal word (DANGER, WARNING, or CAUTION) is used with the safety alert symbol to indicate the likelihood and the potential severity of injury. In addition, a hazard symbol may be used to represent the type of hazard.



DANGER indicates a hazard that, if not avoided, will result in death or serious injury.



WARNING indicates a hazard that, if not avoided, could result in death or serious injury.



CAUTION indicates a hazard that, if not avoided, might result in minor or moderate injury.



CAUTION, when used without the alert symbol, indicates a situation that could result in damage to the door.



NOTICE is used to inform you of a method, reference, or procedure that could assist with specific operations or procedures.

Other symbols that may be used in this manual are:



Lock Out / Tag Out



Crushing



Fire



Shock



Read Manual

DOOR INSTALLATION

WARNING

Improper installation of anchoring devices or installation into aged or unsound concrete block, or other wall material may result in premature wear, product failure, property damage, or serious personal injury.

WARNING



Lock-Out Tag-out all electrical power supplied to the door before making any electrical installations or connections. Also Lock-out Tag-out any equipment near the installation site if that equipment may be inadvertently operated into the area used to assemble and install the door. Failure to properly de-energize electrical circuits and disable equipment during installation and/or maintenance could result in death or serious injury.

WARNING



Use proper lifting equipment and techniques. Properly secure all loads. Failure to properly secure all lifting loads could result in death or serious injury.



Secure the work area so that persons not working directly on the installation do not enter the work area.

SITE PREPARATION

Electrical Supply

Qualified electrician must make all electrical mountings and connections in accordance with all applicable regulating body(s) electrical codes and standards. See applicable electrical manual for specifications and wiring instructions.

Door Opening

1. Are the door jambs and support wall structurally sound providing a flat surface for the side columns to mount against?
2. Check the width and height of the door opening and verify the measurements against the dimensions of the door.
3. Is the opening square? Plumb?
4. Is the floor level across the opening?

Make all necessary structural repairs and improvements to provide a “yes” answer to each of the questions above.

TOOLS AND MATERIALS REQUIRED

Personnel

- Two people to install the door
- One person qualified to operate forklift, hoist, or crane
- One electrician to install and connect the control panel and all electrical wiring

Tools

- Assorted wrenches
- Tape measure
- Carpenter’s square
- Level (4ft minimum recommended)
- Lifting device (fork lift, hoist, crane)
- Lifting Straps
- 2 ladders or personnel lifts (tall enough to reach above the door head)
- Other tools as needed for the type of anchoring chosen

Materials

- Anchors appropriate for the type of wall the door and accessories are to be installed onto. Albany Doors recommends through-bolting doors whenever possible.
- Wire as specified on the electrical schematic
- Electrical supplies needed to comply with all regulating body electrical codes and standards.
- See applicable control manual with door.

UNPACKING AND PREPARING

1. Inspect and unpack the components. Report any damage immediately to Albany at 877-925-2468. Refer to the serial number tag located on the right door column.
2. DO NOT cut the banding which holds the door in a roll until instructed to do so in a later procedure.

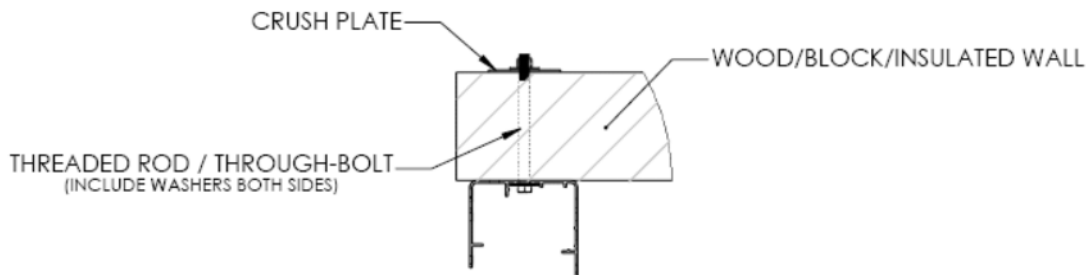
CAUTION

The door panel and roll assembly could be damaged. Use evenly spaced padded supports to prevent rips, tears, or bending of the roll assembly. Failure to protect the roll assembly could result in damage to the door.

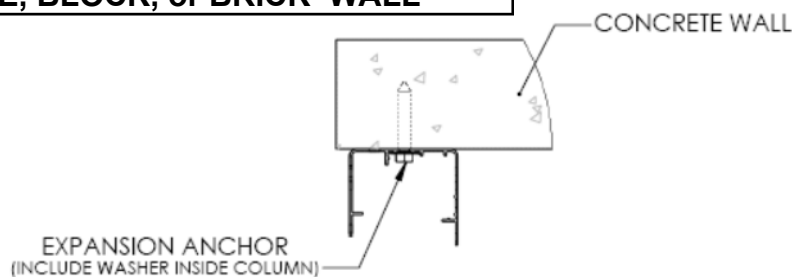
WALL ANCHORING GUIDE

Albany Doors does not supply hardware for mounting the door to the wall. Use proper hardware best suited for each particular door installation. Some examples are shown below. It is the responsibility of the door owner to ensure that the wall material is strong enough to support the forces of the door and all anchoring hardware. In general, Albany Doors recommends through-bolting wherever possible using 1/2 inch diameter bolts/threaded-rods or 1/2 inch diameter concrete expansion anchors.

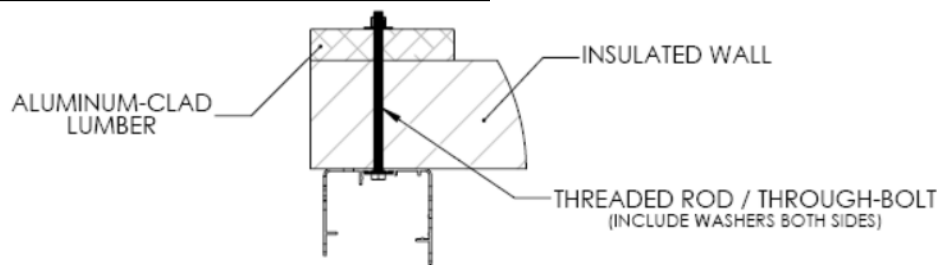
WOOD, BLOCK, BRICK, or INSULATED WALL



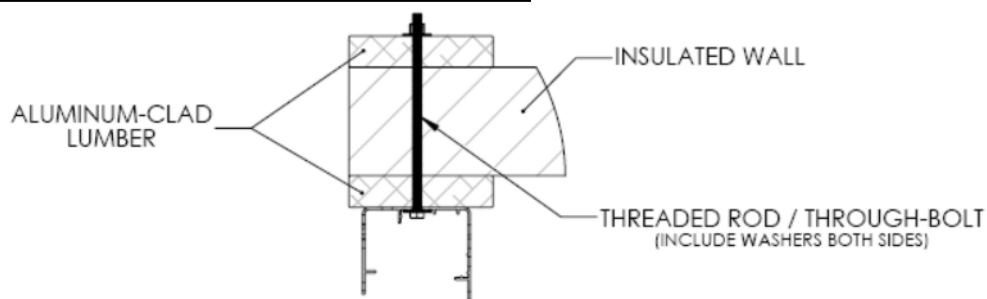
CONCRETE, BLOCK, or BRICK WALL



INSULATED WALL



INSULATED WALL



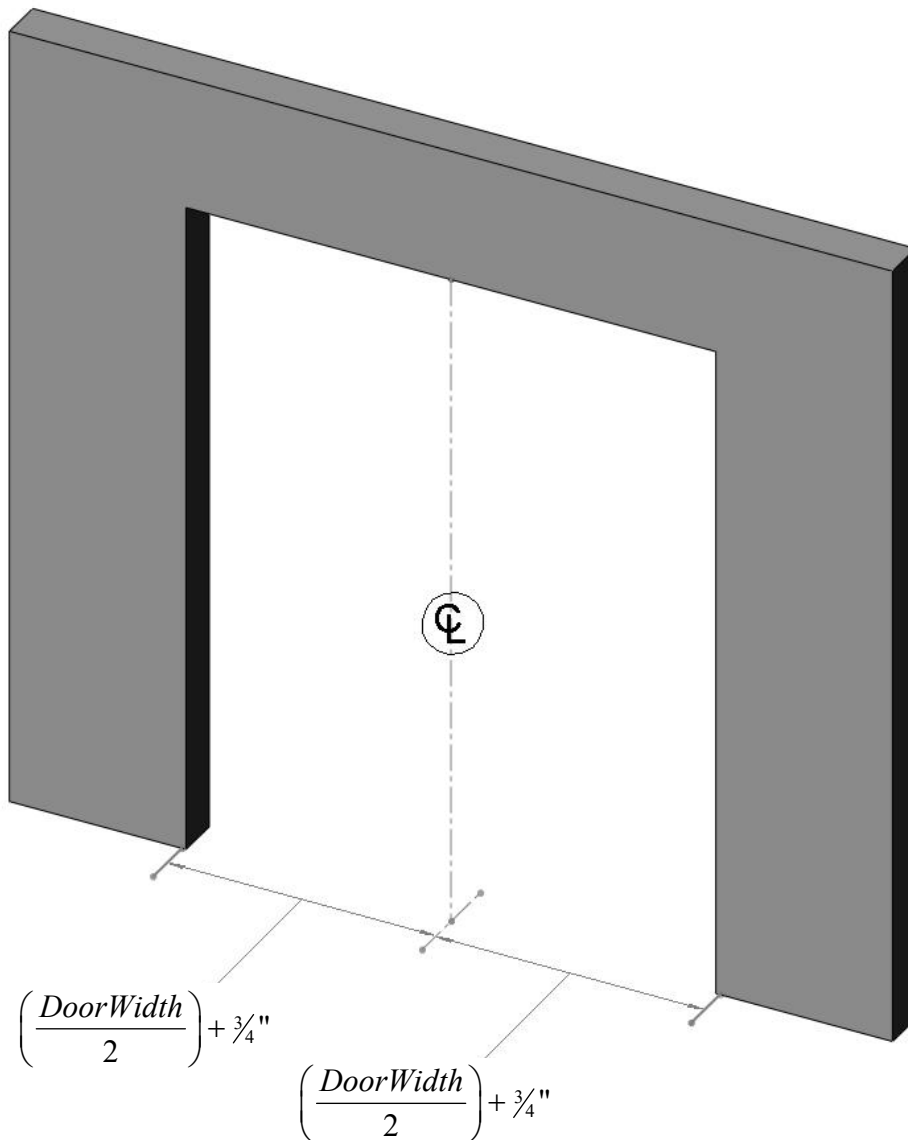
INSTALLATION REFERENCE MARKS

1. Measure from the inside of the left door jamb to the inside of the right door jamb and place a mark on the floor on the door opening centerline.
2. Reference the door's documentation and place two marks on the floor at

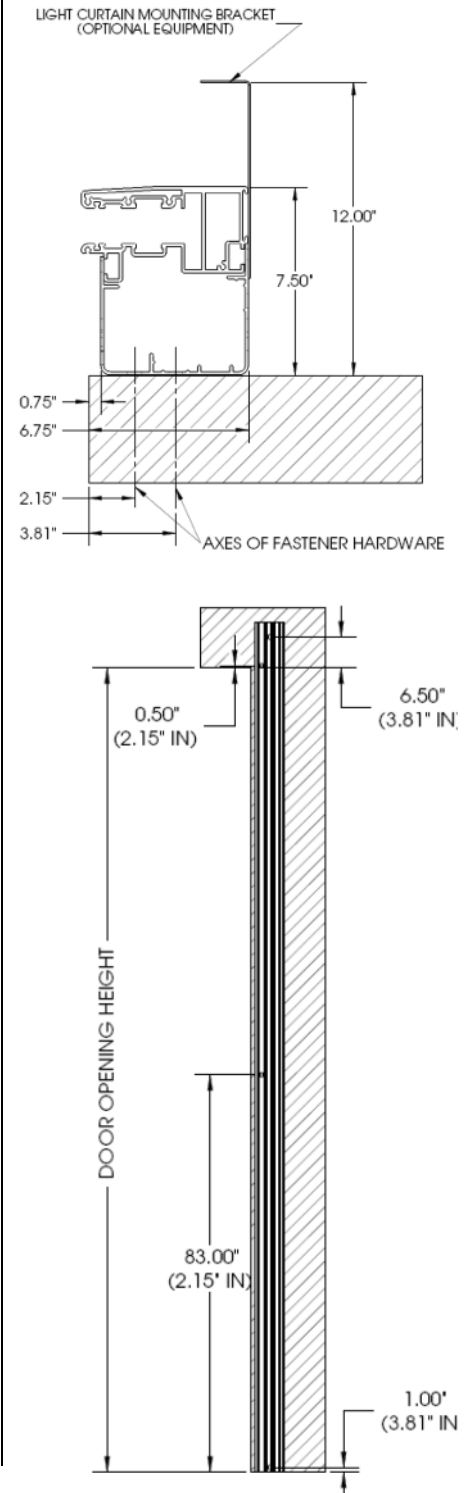
$$\left(\frac{\text{DoorWidth}}{2}\right) + \frac{3}{4}"$$

to the left and to the right of the door opening centerline.

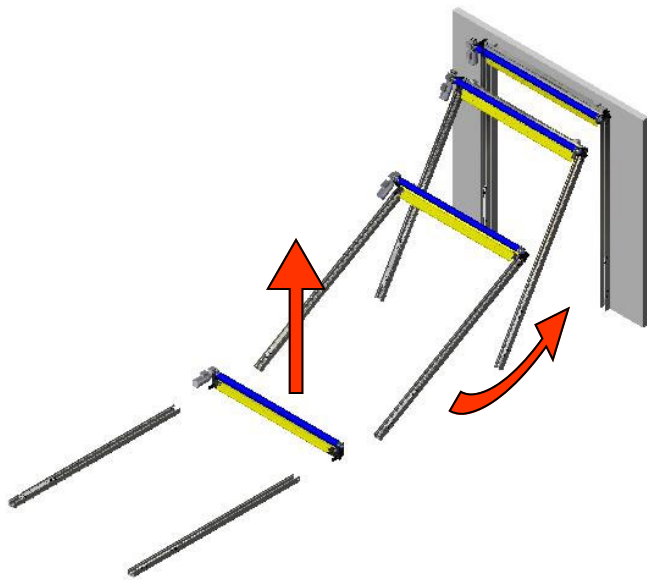
3. Measure the distance between the two new marks. The correct distance should be DoorWidth + 1.5"



DETAIL BELOW SHOWN FOR STANDARD REAR COLUMN MOUNTING. SEE PAGE 8 FOR UltraLite™ INSTRUCTIONS.



MOUNTING THE DOOR ASSEMBLY (optional methods shown)

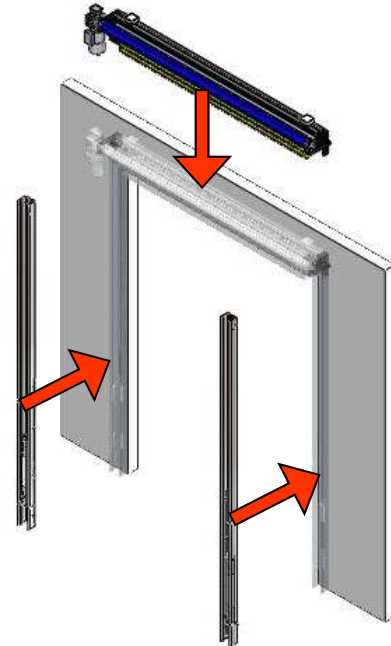


ASSEMBLE ON FLOOR

1. Lay the head assembly on its back on the floor in a clean area in front of the door opening.
2. Remove the bolts securing the yellow front columns to the side columns. Remove and set the yellow front columns off to the side.
3. Position each side column in line with the mounting brackets on the head assembly.
4. Slide the side columns onto the head assembly. Install the three 1/2" flat washers, lock washers, and 1/2"x1" bolts.
5. Square the side columns to the head assembly and tighten the three bolts on each side.
6. If the door was ordered with the optional counterweights, slide the weights into the side columns far enough to install the temporary retainer bolt. Install the nut finger-tight. **Note the "LEFT" and "RIGHT" markings.**
7. Using a safe lifting device, carefully lift the entire door assembly up to a vertical position against the door jambs.



The door assembly is heavy. Use proper lifting devices and techniques to securely and safely lift the door assembly. Failure to properly secure the door assembly could result in death or serious injury.



ASSEMBLE ON WALL

1. Hold the left side column in place against the wall. Align the base with the marking placed on the floor earlier and bring the column into plumb.
2. Mark the locations of the four mounting holes. Prepare the holes and anchor as needed.
3. Loosely install the anchors, recheck for plumb, and tighten the anchors.
4. Repeat steps 1-3 for the right side column.
5. Lay the head assembly on its back on the floor in front of the door opening. Using a safe lifting device, carefully lift the head assembly up into position above the side columns.



The head assembly is heavy. Use proper lifting devices and techniques to securely and safely lift the head assembly. Failure to properly secure the head assembly could result in death or serious injury.



The head assembly must be lifted level (balanced) and with the mounting brackets and motor hanging straight down. Failure to properly position the head assembly could result in damage to the mounting brackets and/or the side columns.

ASSEMBLE ON FLOOR (continued...)

8. Align the base of each side column with the markings place on the floor earlier and bring the columns into plumb.
9. Mark the locations of the mounting holes (4 per side column). Prepare the holes and anchor as needed.
10. Loosely install the anchors, recheck for plumb, and tighten the anchors.

ASSEMBLE ON WALL (continued...)

6. Position the head assembly over the side columns with the mounting brackets in line with the side columns and carefully lower it into place.
 7. Install the three 1/2" flat washers, lock washers, and 1/2"x1" bolts on each side of the head assembly to secure it in place.
- continue on to step 11 on the following page...***



- INDICATES LOCATION OF FRONT COLUMN MOUNTING BOLT

MOUNTING THE DOOR ASSEMBLY (continued...)

11. The photo safety cables are marked and bundled on top of the head assembly at the junction box. Route the light curtain cables through the holes located at the rear bottom of the mounting brackets as shown.
12. Secure the cables to the sides of the columns using the clips supplied and plug them into the appropriate photo device mounted in the column—**note the matching cable markings**. Ensure that all loose slack in the cables is removed. Photo devices are located behind foam insulation on UltraFreeze model doors.
13. UltraFreeze doors will have heat tape in the side columns. Route the power cords for the heat tape up through the holes located at the rear bottom of the mounting brackets to the junction box on top of the head assembly.

COUNTERWEIGHTS—OPTIONAL EQUIPMENT

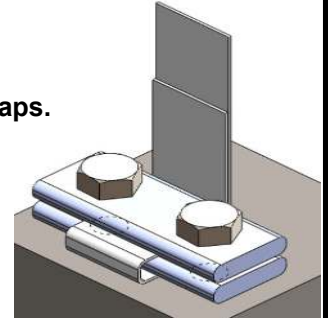
If the door was ordered with counterweights for the optional BacOut egress system, the following steps must be taken at this point in the installation process:

1. Remove the tie wraps from the counterweight straps and route the straps down to the counterweights.
2. Remove any twists that may be in the straps

CAUTION

Do not allow the straps to be twisted or slack. Twisted or loose straps will result in damage to the straps.

3. Loop each strap between the two clamping plates as shown.
4. Pull and hold the straps tight and tighten the clamping bolts.
5. Ensure that all cables/straps are secure and free of any obstructions.

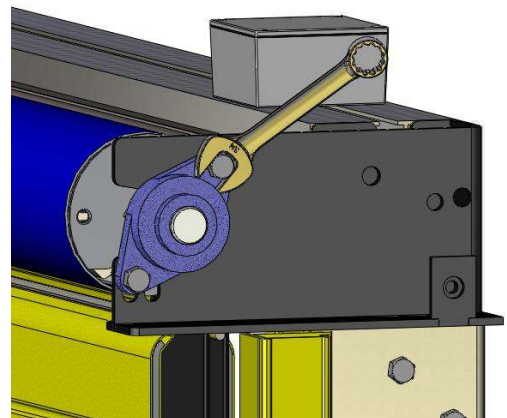


14. Set the yellow front columns into the side columns. If the door was ordered with light curtains, position the front light curtain and mounting bracket against the outside of the side columns and secure the light curtain bracket and the yellow front column with two bolts. Continue installing the remaining bolts provided for each column.
15. Connect the remaining safety cables to the photo safety devices mounted off the yellow front columns and hide the cables behind the wire chase covers on the front columns—**note the matching cable markings**.
16. Caulk header and door jambs to seal the opening when finished.

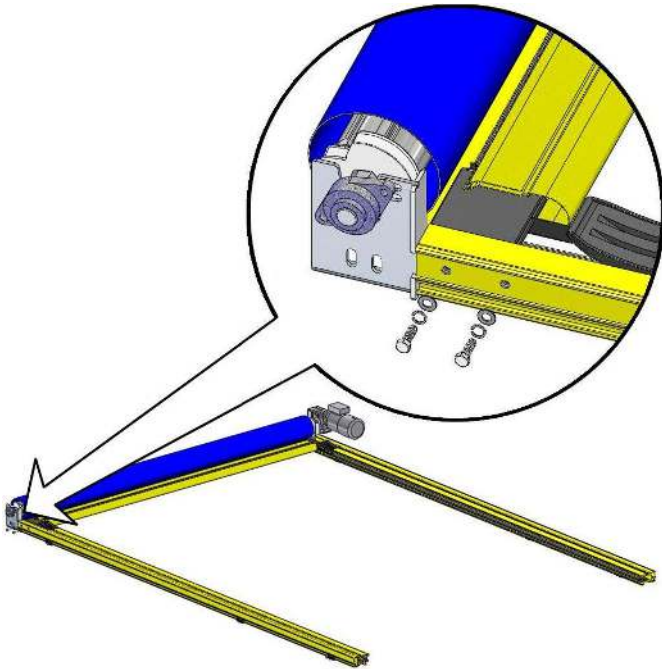
LEVELING THE DRUM ASSEMBLY

The door must be installed to that the roll head assembly is absolutely level, with the side columns plumb and square to the header. If adjustments are necessary...

1. Loosen the pillow block mounting bolts
2. Lift the low end of the roll with a pry bar until the roll is level
3. Re-tighten the pillow block mounting bolts
4. If necessary, loosen the bolt and adjust the motor torque arm position to realign the motor so it is parallel with the wall. Tighten this bolt when done.



MOUNTING LOW PROFILE DOORS



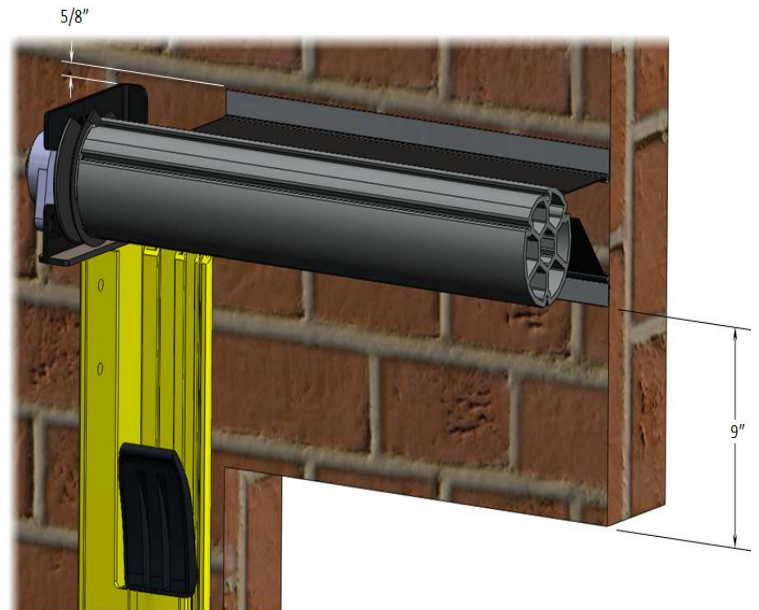
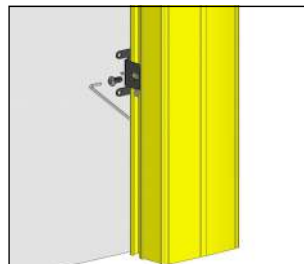
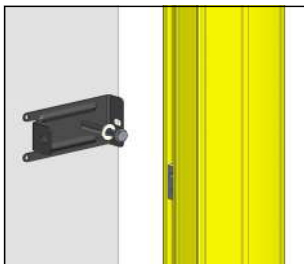
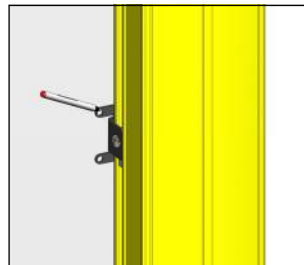
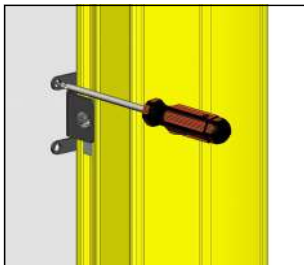
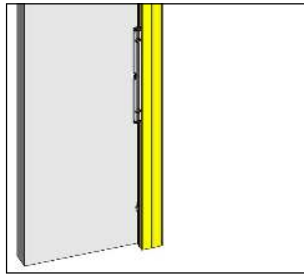
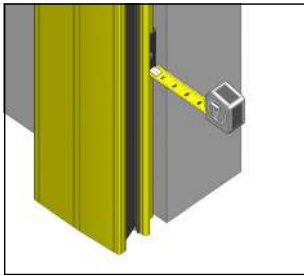
1. Lay the head assembly on its back on the floor in a clean area in front of the door opening.
2. Slide each side column onto the head assembly. Install the two 1/2" flat washers, lock washers, and 1/2"x1" bolts in each bracket.
3. Using a safe lifting device, carefully lift the entire door assembly up to a vertical position against the door jambs.

CAUTION

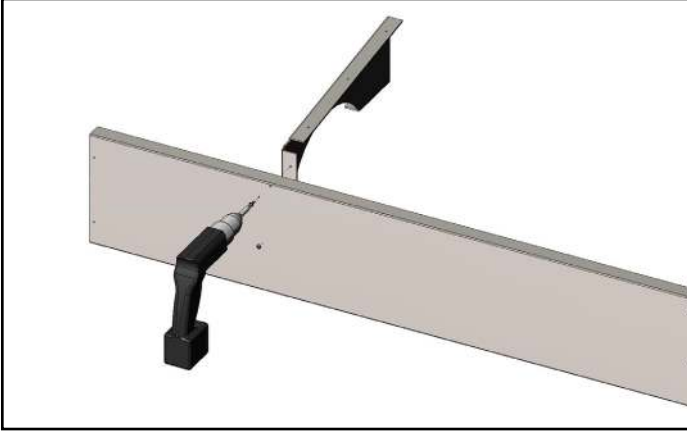


The head assembly is heavy. Use proper lifting devices and techniques to securely and safely lift the head assembly. Failure to properly secure the head assembly could result in death or serious injury.

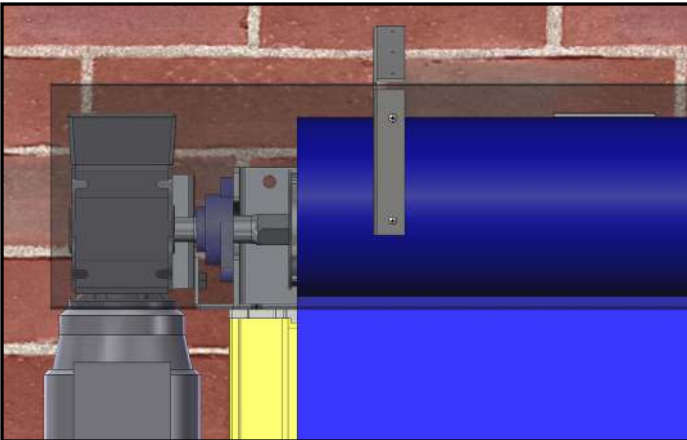
4. Position the side columns with the inside face of the black mounting brackets set 3/4" out from the door jamb on each side. Ensure the columns are plumb and mark or temporarily fasten the mounting brackets to the wall.
5. Disconnect the side columns from the mounting brackets by removing the 2 bolts in each bracket.
6. Move the columns off the wall. Prepare the holes and permanently anchor the mounting brackets as needed. These brackets could also be welded to a steel jamb.
7. Reattach the side columns to the mounting brackets using the 2 bolts removed from each bracket earlier.
8. Install the head seals to the wall as shown below.
9. Caulk door jambs to seal the opening when finished.



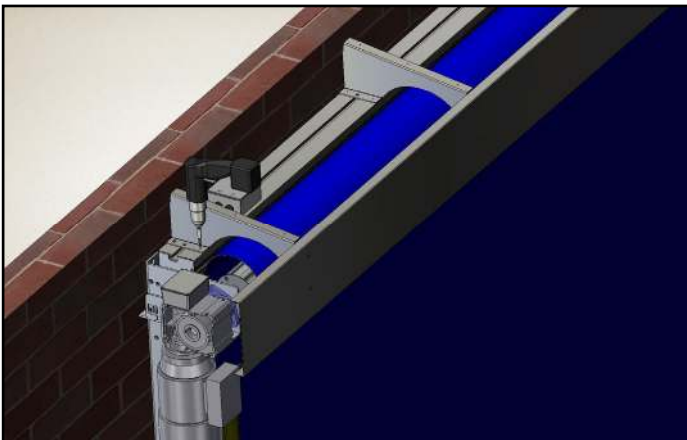
HOOD MOUNTING FOR ULTRAFAST DOORS



Align the manufactured pre-drilled holes in the hood spreader with the slant brackets and fasten using self – tapping screws.



Verify motor clearance by aligning the hood spreader and brackets on the header.



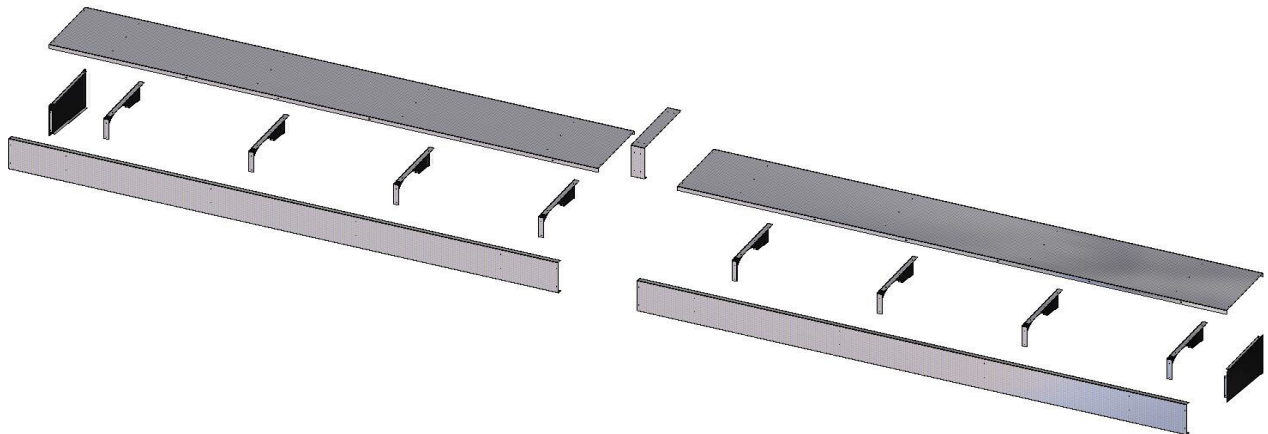
After verifying clearance, fasten the brackets to the header using self – tapping screws.

HOOD MOUNTING FOR ULTRAFAST DOORS (continued....)

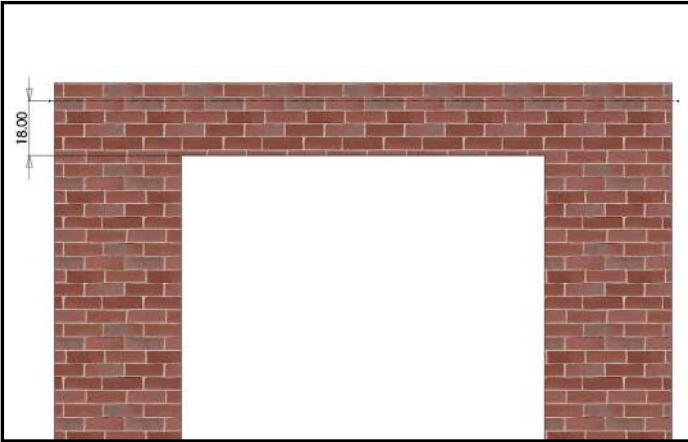
Exploded Assembly View for One Piece Hood



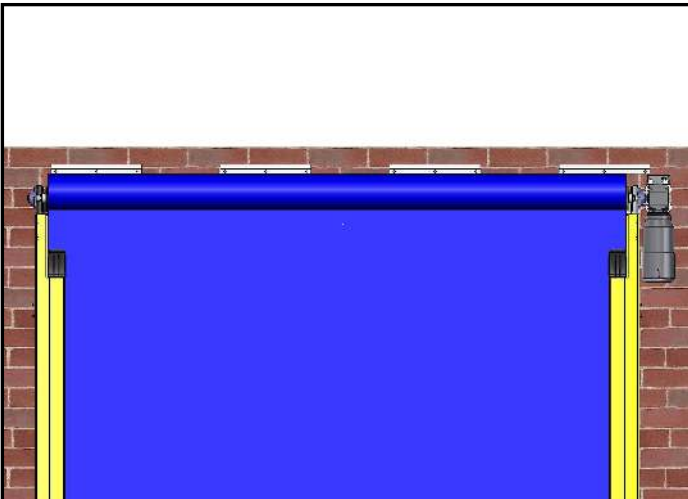
Exploded Assembly View for Two Piece Hood



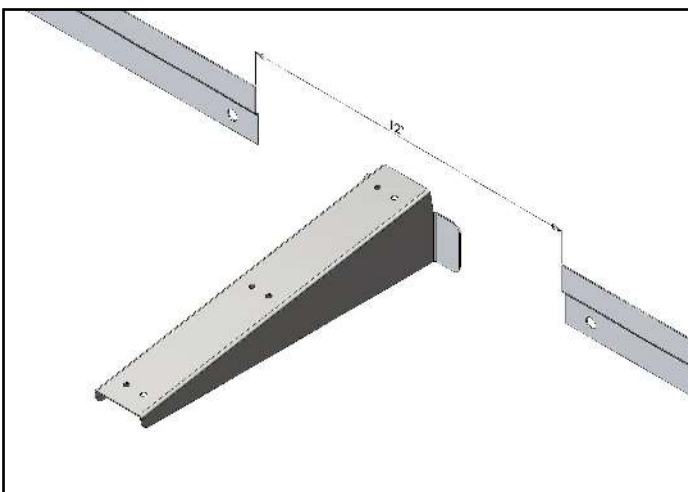
HOOD MOUNTING FOR LOW PROFILE DOORS



Mark a level horizontal line on the wall 18" above door opening.

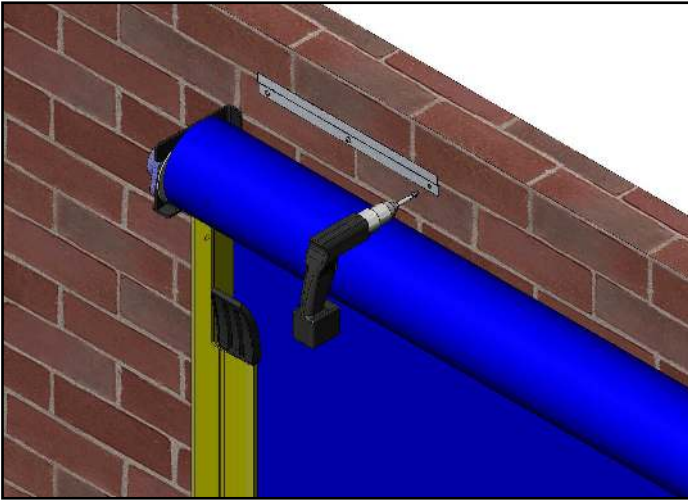


Space brackets evenly across door opening at marked height.

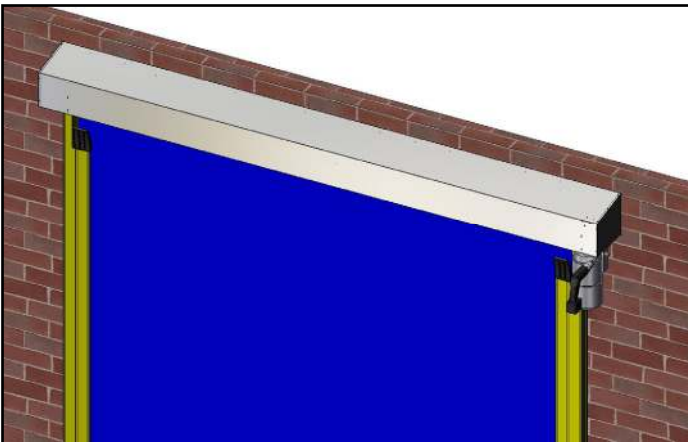


Leave a 12" gap between Z-brackets near centerline of door.

HOOD MOUNTING FOR LOW PROFILE DOORS (continued....)



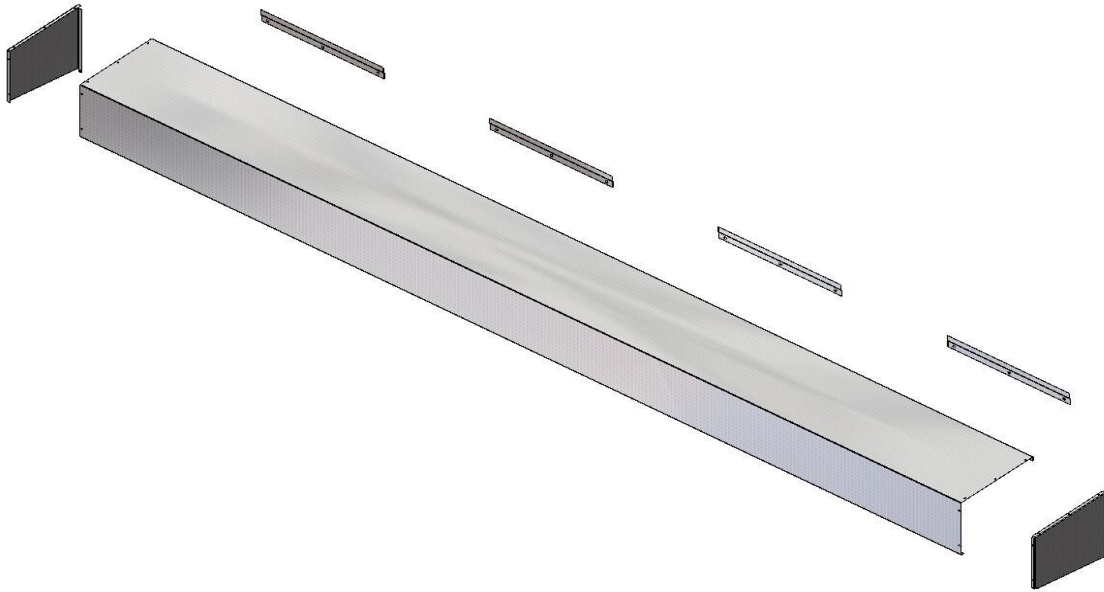
Permanently attach Z-brackets to wall placing the bottom of the brackets on the placement line.



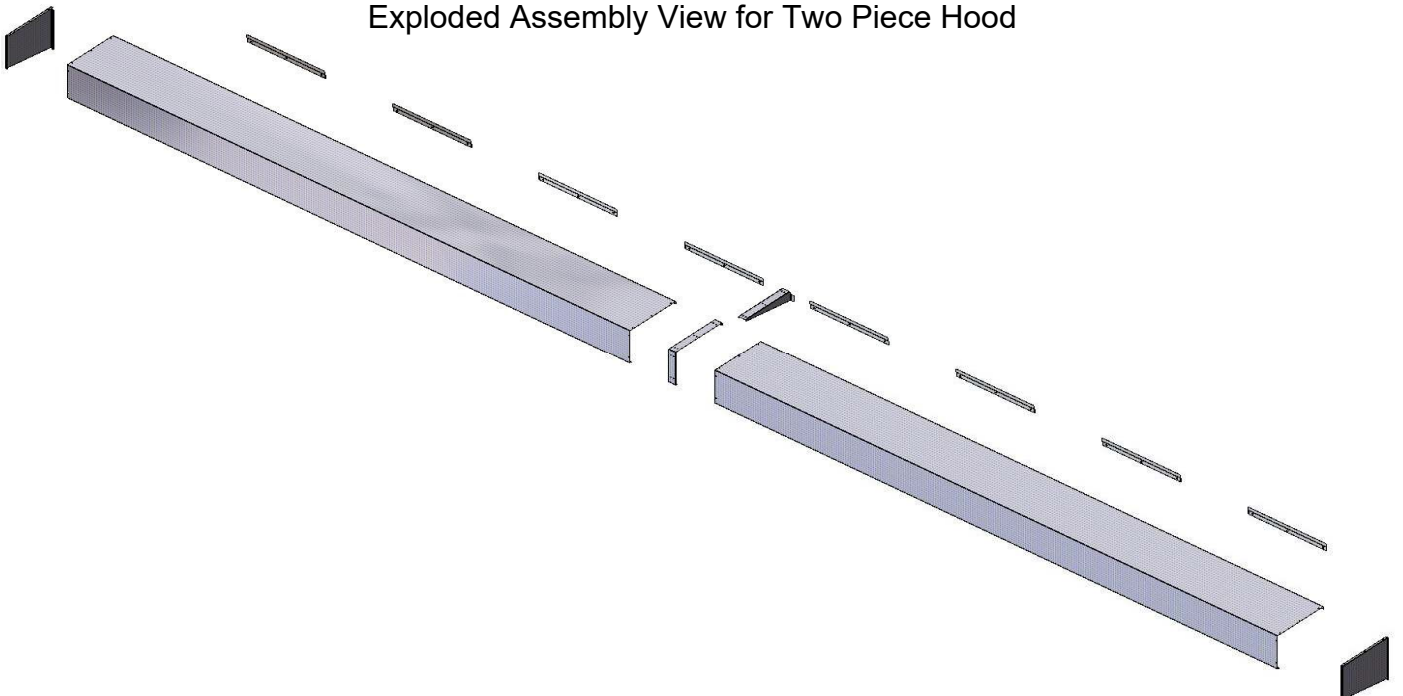
Assemble hood using self-threading screws as shown in the exploded views on next page. Hang the hood assembly on the mounting brackets and secure.

HOOD MOUNTING FOR LOW PROFILE DOORS (continued....)

Exploded Assembly View for One Piece Hood



Exploded Assembly View for Two Piece Hood



Installing Manual Hoist Brake Release—Optional equipment

Doors equipped with a manual chain hoist will require the installation of a mechanical brake release rod that when actuated will pull down on the manual brake release rod of the motor so that hoisting the door can be performed without having to drive thru the brake of the motor.

Install the 'Z' bracket to chain hoist housing.

Use the nut and bolt to secure bracket to housing.



Locate the brake release cable, hose clamp, one 8-32x1/2" bolt and 8-32 Nyloc nut.

Install hose clamp to brake release cable. Place hose clamp approximately 30mm away from end of cable sheath.

Install 8-32x1/2" bolt into the hose clamp



Place exposed end of brake release cable through the thru-hole on brake release arm.

Install brake release cable assembly to the 'Z' bracket.



Fasten the 8-32 nut to bolt to secure hose clamp to 'Z' bracket.

T-handle must be in the fully retracted position during the install and mounting process.



Verify the brake release arm is in the 'Disengaged' or upper position.

Install cable clamp to the exposed end of brake release cable and tighten the two nuts to secure clamp.

The T-handle mounting bracket can now be wall mount to desired height. Once mounted you will need to verify the functionality of the brake release cable along with the functioning of the manual hoist. If the release rod is working properly the hoist should require little effort to operate. Improper adjustment of the brake release will allow the brake to drag during the hoisting of the door.

 WARNING

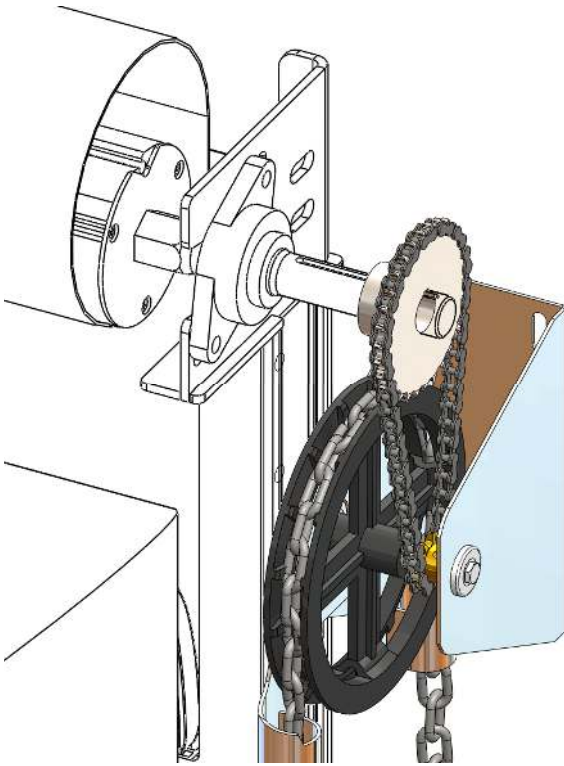
It is imperative that you verify the electrical interlock function of the hoist. When the hoist is engaged (red handle pulled down) the hoist disengagement switch will open and if properly connected to the control will act as a stop input function disabling the control from operating the door electrically. The control system should not be able to electrically function the door while the hoist is engaged. Refer to the schematics supplied with the door for hoist interlock switch wiring.

MOUNTING THE CHAIN HOIST— UltraDock or non-motorized doors

CAUTION



The fabric panel of the head assembly must remain strapped to itself until the chain hoist assembly is fully installed with the roller chain taugt and the hand chain properly secured to the wall. Failure to properly secure the head assembly could result in serious injury.



1. Remove the roller chain from its packaging and hang it over the large sprocket installed on the drum shaft.
2. Remove the chain hoist assembly and hold it in position on the wall below the drive barrel such that the small roller chain sprocket next to the hand chain pulley is directly in line with the larger sprocket above it on the drum shaft as shown.
3. Mark the 4 mounting hole positions on the wall for the chain hoist assembly.
4. Mark the roller chain where it needs to be split to the proper length
5. Securely fasten the chain hoist assembly to the wall.
6. Split and reconnect the roller chain between the drum sprocket and chain hoist sprocket using the master link provided.
7. With the front length of chain (located farthest from the wall) properly secured to the wall using the bracket provided, remove the plastic securing strap from the rolled fabric panel of the head assembly.

Periodic Maintenance

Albany Door Systems high speed doors are engineered for low maintenance operation. The door should be visually inspected daily for wear and tear, and operated to verify functions. Quarterly maintenance should be performed to clean components and to check all safety functions and check for mechanical and electrical integrity.

Daily Inspection

1. Inspect the door fabric for wear or damage.
2. Operate the door through several openings and closings. Verify that the door seats against the floor and that the door fabric remains tight and does not wrinkle. Verify that the door opens fully, slightly beyond the wall opening, and does not open too far.
 - If the door does not seat against the floor properly or opens to the wrong position, refer to “Setting Door Limit Adjustments”.
 - If the door fabric has diagonal wrinkles the door fabric roll at the top of the door is not level and perpendicular to the side rails. Leveling adjustments should be made as soon as possible to prevent wear or damage. Refer to the installation instructions or contact Albany Door Systems.
3. With the door closing, place an object through the light curtain, or photoeyes, on each side of the door. Verify that the door stops immediately.
4. If a multiple panel door is installed, check at each end of the ribs to verify that they are in place and centered.
5. Should you ordered the optional light curtain, check the light curtain slots for dirt or dust accumulation and clean as necessary.
6. While the door is closing, tap the bottom of the door edge wand verify that the door stops and reverses to a fully open position.

CAUTION

Do not stand under the door when performing the following inspection. If the bottom bar reversing switch is not functioning correctly injury can occur.

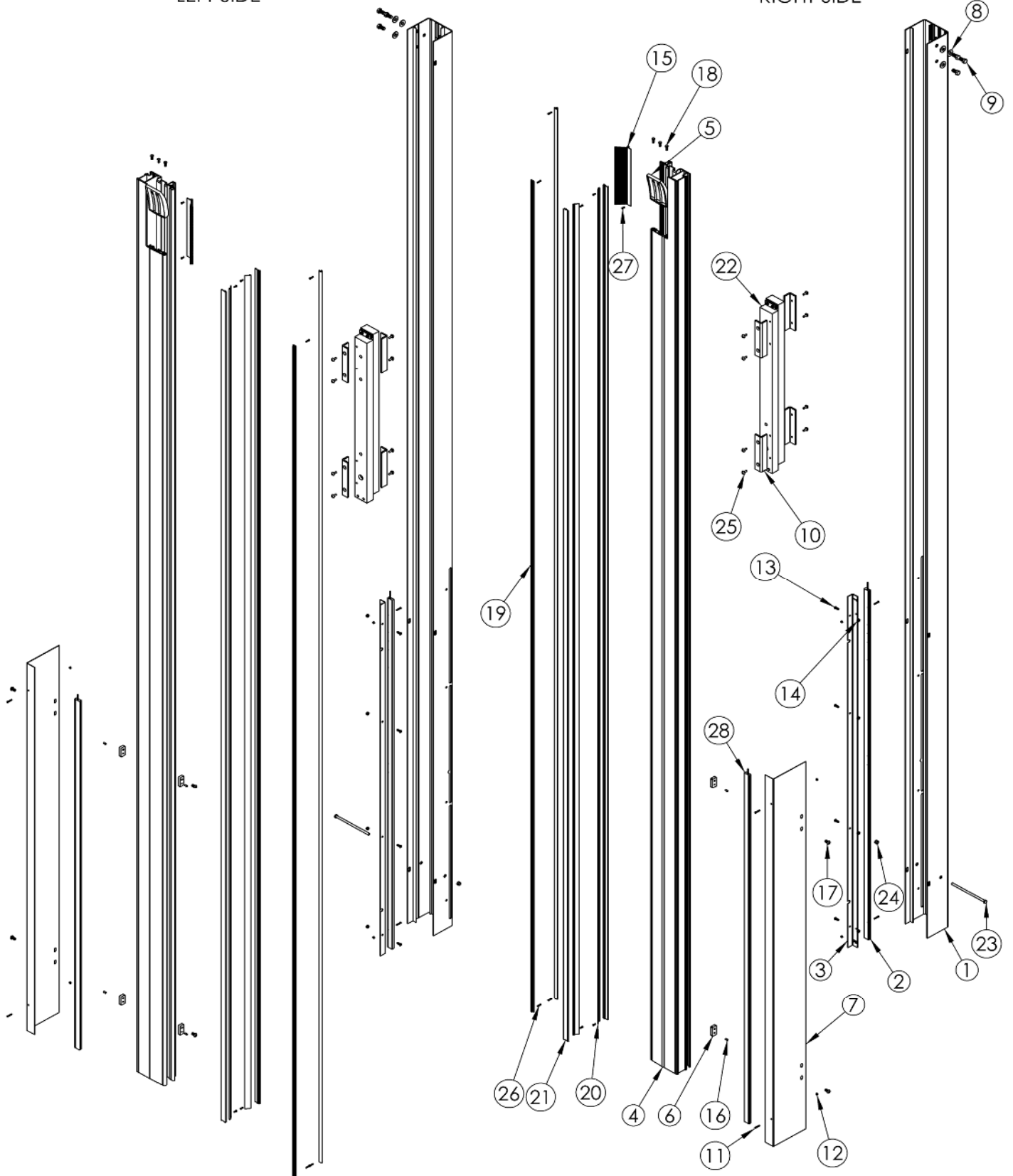
Periodic Maintenance Continued...

Quarterly Inspection

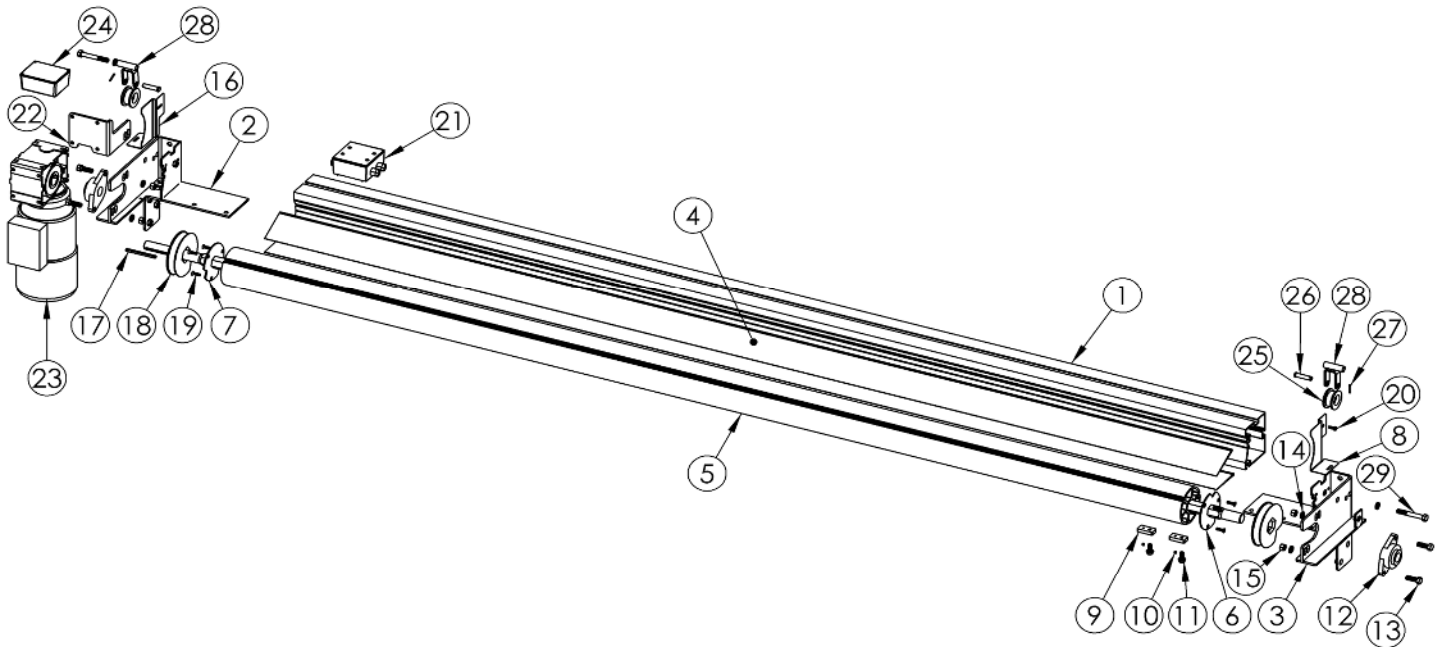
1. Perform daily inspection.
2. Check all mounting hardware and verify that all nuts and bolts are tight. Hardware includes: wall anchors, cover hardware, motor mounting hardware, and bearing bolt nuts.
3. Check the break away function by performing the following steps:
 - Stop the door so the bottom rail is between waist and chest high.
 - Push the bottom bar out of one of the side columns.
 - Press the open key pad and verify that the door opens to the break away opening height and that the bottom bar centers in the side rails.
 - Press the close key pad and verify that the bottom rail is centered and the door closes fully.
4. Inspect all side and top weather seals for wear or damage.

LEFT SIDE

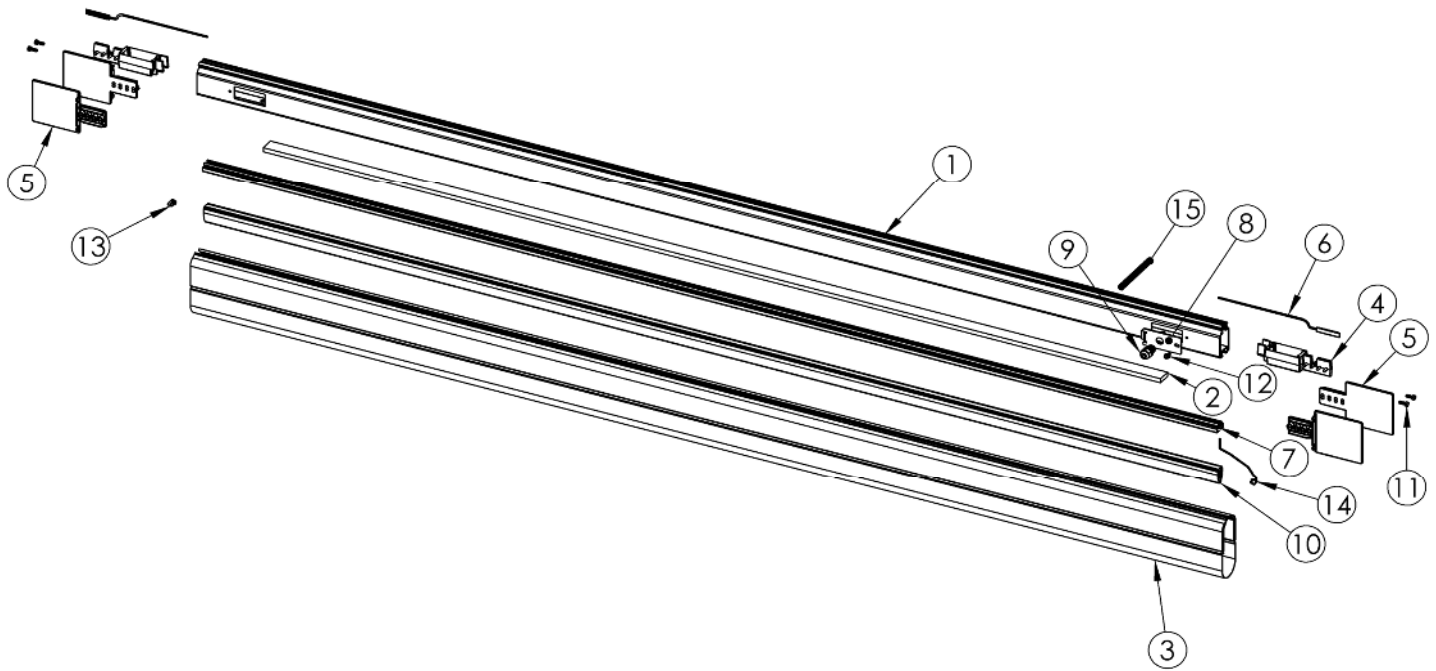
RIGHT SIDE



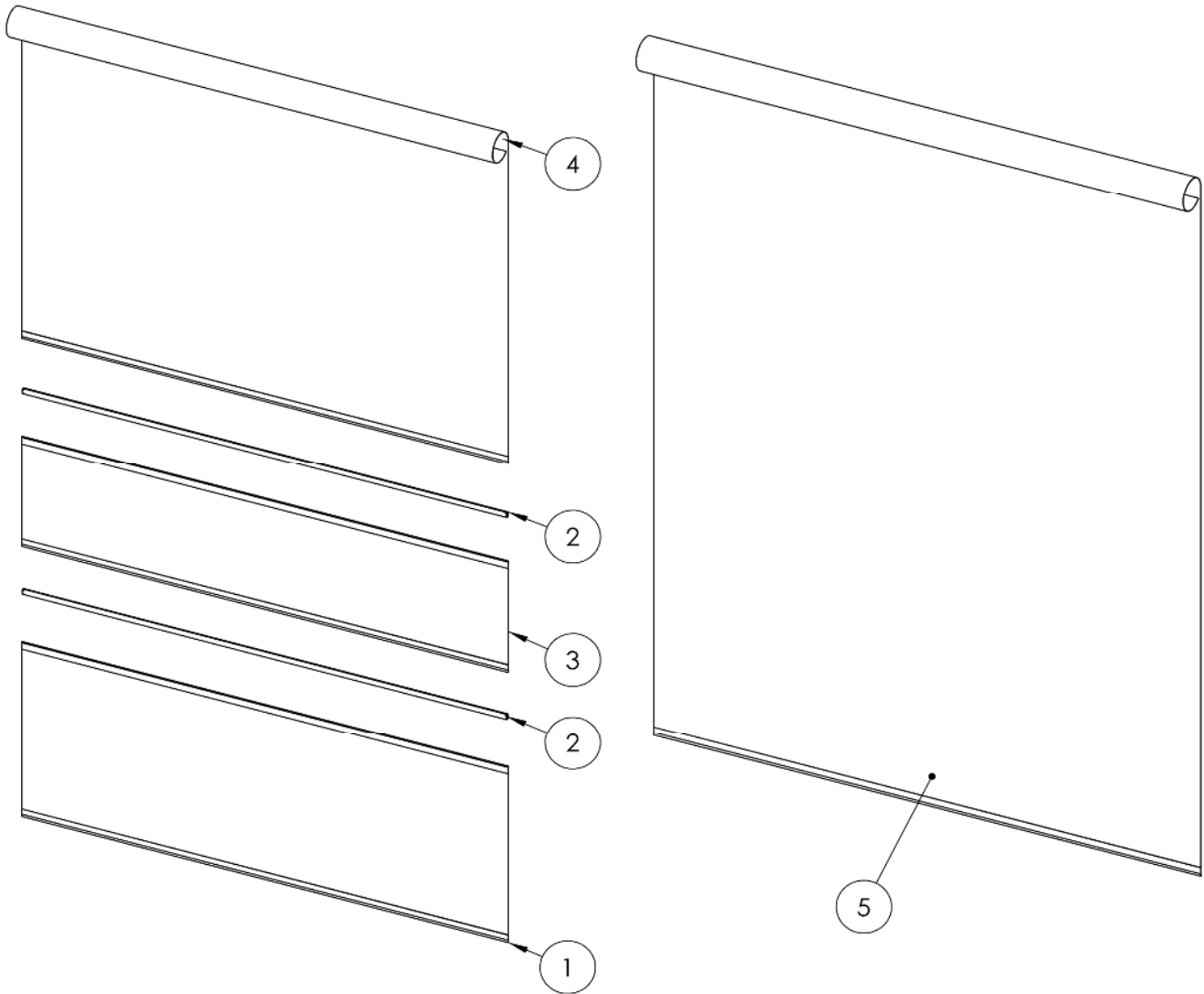
ITEM NO.	PART NUMBER	DESCRIPTION	QTY.
1	000013-K	REAR COLUMN EXTRUSION, RIGHT	1
2	001154	LIGHT CURTAIN MASTER TRANSMITTER M12	1
3	000245-G	REAR LIGHT CURTAIN BRACKET	1
4	000024-G	FRONT COLUMN EXTRUSION, RIGHT	1
5	000019-E	RETRACK FLAP	1
6	000021-A	PLATE T - SLOT	5
7	000334-C	FRONT LIGHT CURTAIN BRACKET	1
8	000421	WASHER FLAT 1/2"	3
9	000087	BOLT HHC 1/2 - 13 X 1"	3
10	000105-B	GLIDE STRIP, COUNTERWEIGHT CORNER	4
11	000419	SCREW PH PAN # 6 X 1" 18.8 SS	4
12	96278A007	NUT KEPS 6 - 32 18.8 SS	4
13	000424	SCREW BH 1/4 - 20 X 3/4" 18.8 SS	4
14	96278A511	NUT KEPS 1/4 - 20 18.8 SS	4
15	000143	SEAL BRUSH/TRACK	1
16	000022	SCREW SET CUP 1/4 - 20 X 1/2"	5
17	000412	SCREW BH 3/8 - 16 X 3/4" 18.8 SS	5
18	000036	BOLT HHC 1/4 - 20 X 1	3
19	000822-D	GLIDE STRIP, 16FT LENGTH	2
20	000913-B	FRONT COLUMN SEAL	2
21	000912-D	FRONT COLUMN SEAL HOLDER, 205"	2
22	000004-C	COUNTERWEIGHT, RIGHT SIDE	1
23	000009	BOLT HHCS 3/8 - 16 X 8"	1
24	000010	NUT 3/8 - 16	1
25	000106	RIVET MUSHROOM HEAD 1/4" X 3/4"	8
26	00406	SCREW PH PAN #6 X 3/4" 18.8 SS	4
27	000315	SCREW PH PAN # 6 X 1/2" 18.8 SS	6
28	001157	LIGHT CURTAIN SLAVE RECEIVER M12	1



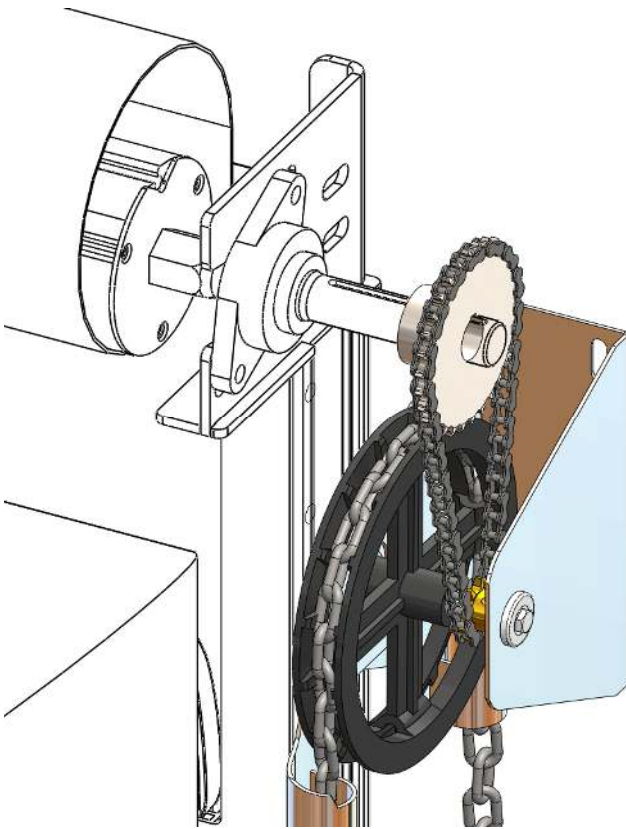
ITEM NO.	PART NUMBER	DESCRIPTION
1	000026	TOP BEAM EXTRUSION
2	000233	WELDMENT TOP BEAM BRACKET LEFT
3	000236	WELDMENT TOP BEAM BRACKET RIGHT
4	000027	GASKET VINYL TOP BEAM CUT TO LENGTH
5	000039	DRUM EXTRUSION
6	000040	DRUM AXLE BEARING SIDE
7	000043	DRUM AXLE MOTOR SIDE
8	000382	TOP BEAM CLOSER BRACKET RIGHT
9	000021	PLATE T - SLOT
10	000048	Set Screw, 1/4-20 x 0.25" Lg
11	000415	BOLT FLANGE SERRATED 3/8 - 16 X 1" 18.8 SS
12	000030	BEARING FLANGED MOUNTED DRUM
13	000422	BOLT HHC 1/2 - 13 X 1-1/2"
14	000420	WASHER LOCK 1/2"
15	000035	NUT HEX NYLOCK 1/2 - 13
16	000383	TOP BEAM CLOSER BRACKET LEFT
17	000046	KEY STOCK .25" SQUARE X 4.00"
18	000240	COUNTERWEIGHT SPOOL
19	000051	SCREW, TORX FLAT HEAD 1/4 - 20 X 1 - 1/4"
20	000036	BOLT HHC 1/4 - 20 X 1
21	CONSULT FACTORY	JUNCTION BOX
22	000744-C	TORQUE ARM, NORD, RH
23	CONSULT FACTORY	MOTOR
24	CONSULT FACTORY	ENCODER BOX
25	000033	PULLY COUNTERWEIGHT STRAP
26	000411	1/2 X 2 CLEVIS PIN STEEL ZINC SPEC HEAD HGT 070
27	000410	PIN COTTER 7/64 X 1"
28	000342	YOKE
29	000239	SCREW HEX 1/2 - 13 X 3 - 1/2"



ITEM NO.	PART NUMBER	DESCRIPTION
1	CONSULT FACTORY	BOTTOM BAR EXTRUSION
2	000062	BOTTOM BAR WEIGHT
3	000070	BOTTOM BAR LOOP SEAL
4	000675	BLOCK, ENDCAP, BOTTOM BAR, RF
5	000749	BREAKAWAY TAB
6	000967	3.5" BREAKAWAY SWITCH LOW SENSITIVITY
7	000918	REVERSING EDGE EXTRUSION HOLDER
8	000241	HOLE PLATE, BOTTOM BAR, WIRE HOLE
9	000398	CORD GRIP, COIL
10	001180	REVERSING EDGE CONDUCTIVE EXTRUSION GE245TK
11	000036	BOLT HHC 1/4 - 20 X 1
12	000616	SCREW FLANGE 1/4 - 20 X 1/2"
13	001292	PLUG, SAFETY EDGE, 8.2K
14	001005	PLUG, SAFETY EDGE WITH CABLE
15	CONSULT FACTORY	COIL CORD



ITEM NO.	PART NUMBER	DESCRIPTION
1	000056	PANEL, BOTTOM SECTION
2	000057	WIND RIB EXTRUSION
3	000055	PANEL, MIDDLE SECTION
4	000054	PANEL, TOP SECTION
5	000184	PANEL



PART #	DESCRIPTION
000804	Manual Chain Hoist Assembly
000823	Drum sprocket #40 Chain 60 tooth 1.125" bore
001373	Shaft collar 1.125"ID x 0.5"
001374	#40 Chain 48' Length
001375	Key Stock 1/4" x 5/16" Zinc Plated Undersized
001376	Split bushing 1.125"ID x 1.25"OD x 3"
001175	Viscous Sped governor 1.25" shaft 60K cSt
000766	Bracket motor Mounting Nord Low Profile
001178	Spring Loaded Hinge Pall

ALBANY

ENTRE//MATIC



Puertas & Portones Automaticos S.A. de C.V.

¡Nuestra pasión es la Solución!....

»PUERTAS RAPIDAS ENROLLABLES MARCA ALBANY MOD.ULTRAFAST.

ALBANY

ENTRE//MATIC

(229) 461-7028

portonesautomaticos@adsver.com.mx
ads.portonesautomaticos@outlook.com



V05.26



(229) 927-55107, 167-8080, 167-8007, 151-7529

www.adsver.com.mx